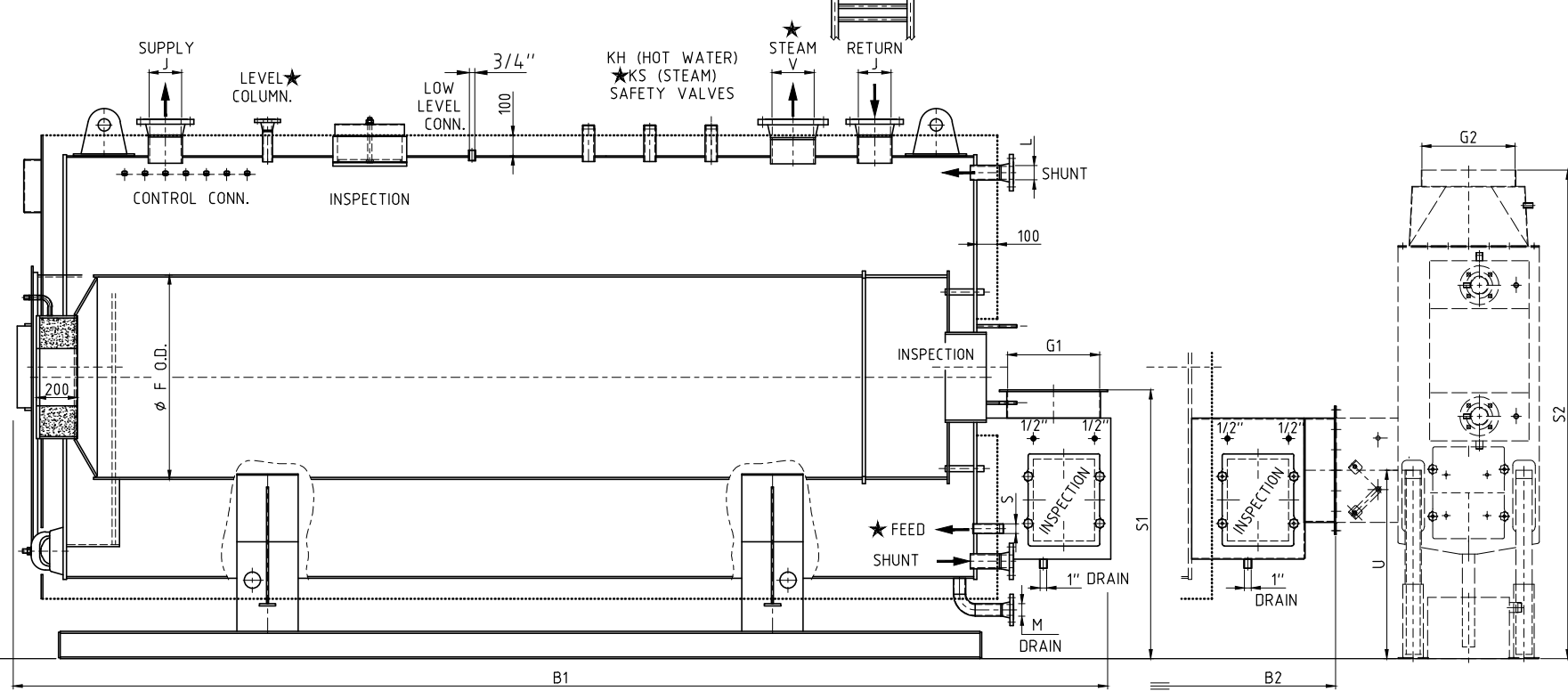
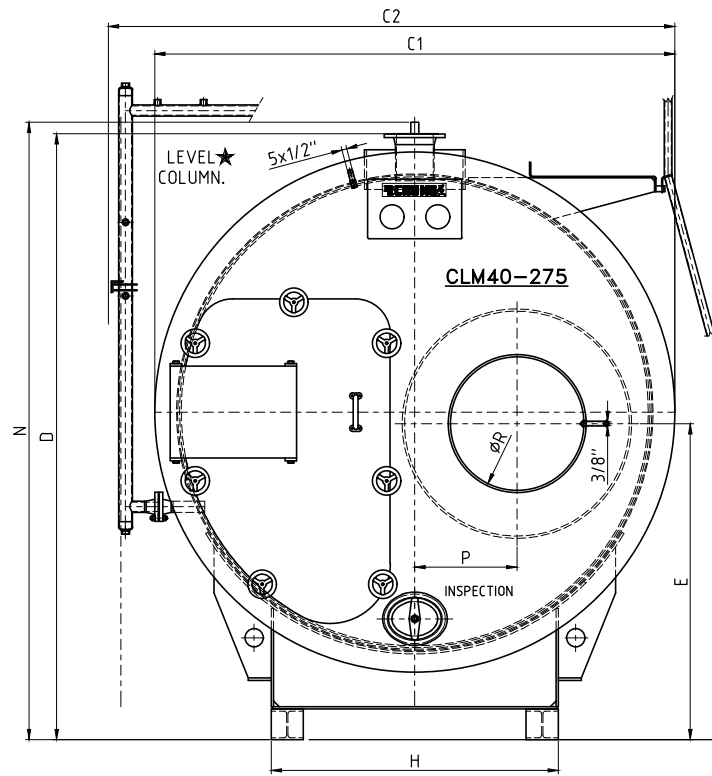
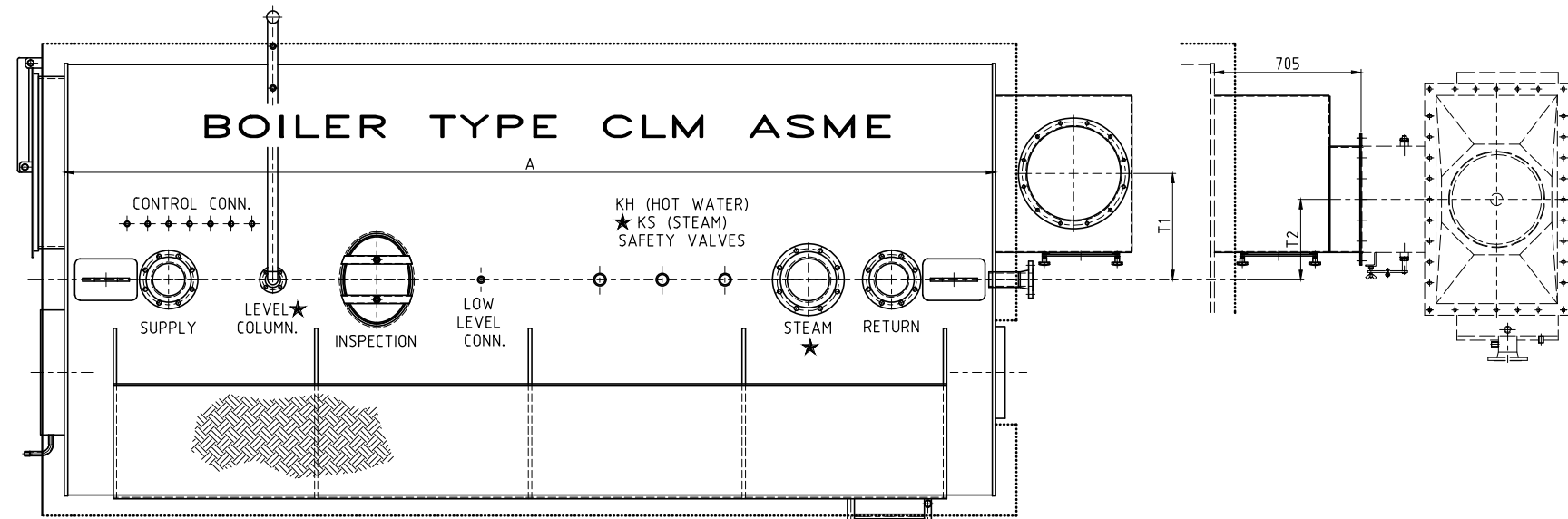


- ★-The hotwater boiler has NO levelcolumn, feed and steamconnection.
- ★-The safety valve conn. of the hotwater boilers are acc. tabel KH
- ★-The safety valve conn. of the steam boilers are acc. tabel KS



Type	Capacity (Mcal)	Capacity (HP)	Steam Capacity (kg.st/h)	Water vol. (Ltr.)	Weight (kg)	H.S. (m2)	Gassided Vol. (m3)	dp (mmWC)	A	B1	B2	C1	C2	D	E	F	G1	H	J	KH	L	M	N	P	R	S1	T1	B2	G2	S2	T2	U	V	KS	Excellent cond. TYPE
CLM 40	1000	120	1580	5200	5320	40	2,2	60	3570	4265	4450	1870	2080	2250	1185	800	300	1000	5"	2x2"	2"	2"	2300	340	420	1263	428	4500	300	2301	305	920	5"	2x2"	L12C
CLM 50	1200	144	1975	6140	6030	50	2,7	55	3570	4450	4450	2020	2230	2400	1260	880	350	1000	6"	2x2"	2,5"	2"	2450	385	420	1208	465	4500	350	2289	405	815	6"	2x2"	L18C
CLM 60	1500	180	2370	8290	7450	60	3,6	60	4470	5350	5350	2090	2300	2470	1295	900	400	1250	6"	2x2"	2,5"	2"	2520	400	420	1288	485	5400	350	2369	370	895	6"	2x2"	L18C
CLM 75	2000	240	3160	9780	8420	75	4,5	62	4470	5350	5350	2274	2484	2654	1387	1000	450	1250	6"	2x2"	2,5"	2"	2704	445	580	1325	508	5400	450	2406	385	932	8"	2x2"	L24C
CLM 95	2500	300	3950	11790	10050	95	5,9	60	4470	5400	5400	2504	2714	2877	1495	1150	500	1500	8"	2x2"	3"	2"	2927	485	580	1483	600	5400	450	2566	485	1040	8"	2x2"	L30C
CLM 115	3000	360	4740	12970	10550	115	6,7	68	4470	5450	5450	2624	2834	2997	1555	1200	550	1500	8"	3x2"	4"	2"	3047	520	580	1543	633	5400	500	2726	455	1100	8"	3x2"	L36C
CLM 130	3500	420	5530	15790	12740	130	8,3	68	5470	6500	6500	2616	2826	3008	1570	1200	600	1500	8"	3x2"	4"	2"	3058	520	580	1518	605	6400	550	2706	475	1025	10"	3x2"	L42C
CLM 145	4000	480	6320	17080	13380	145	9,0	68	5470	6550	6550	2724	2934	3116	1624	1250	650	1700	8"	4x2"	4"	2"	3166	545	580	1512	625	6400	600	2700	525	1019	10"	4x2"	L48C
CLM 155	4500	540	7110	18190	14950	155	10,2	76	5470	6600	6600	2824	3034	3216	1674	1350	700	1700	10"	4x2"	4"	2"	3266	545	580	1602	698	6400	650	2730	605	1059	10"	4x2"	L60C
CLM 170	5000	600	7900	19350	15530	170	11,0	76	5470	6600	6600	2924	3134	3316	1744	1400	700	1800	10"	4x2"	4"	2"	3366	570	700	1612	713	6400	650	2740	605	1069	12"	4x2"	L60C
CLM 185	5500	660	8690	21740	17150	185	12,7	80	5770	6900	6900	3024	3234	3435	1843	1450	700	1800	10"	5x2"	4"	2"	3485	595	700	1661	708	6700	700	2789	583	1118	12"	5x2"	L72C
CLM 200	6000	720	9480	23850	19450	200	13,4	80	5770	6950	6950	3124	3334	3535	1893	1500	750	1800	10"	5x2"	5"	2"	3585	615	700	1756	768	6700	700	2884	605	1213	12"	5x2"	L72C
CLM 220	7000	840	11060	26370	19850	225	16,0	90	5970	7200	7200	3274	3484	3685	1968	1600	800	2000	10"	6x2"	5"	2,5"	3735	640	830	1832	838	6900	700	2940	668	1289	14"	6x2"	L84C
CLM 250	8000	960	12640	29520	22140	250	17,8	98	6670	7950	7950	3274	3484	3685	1968	1600	850	2000	10"	7x2"	5"	2,5"	3735	640	830	1856	828	7600	800	3084	705	1263	14"	7x2"	L96C
CLM 275	9000	1080	14220	30500	23800	275	18,4	98	6670	8000	8000	3320	3530	3731	1991	1600	900	2000	12"	7x2"	5"	2,5"	3781	665	830	1879	828	7600	850	3102	620	1286	16"	7x2"	L108C



Grote Esch 400  
2841 MJ Moordrecht (NL) | Tel. +31(0)182 614 482 | e-mail : info@fhcrone.nl  
fax +31(0)182 633 257 | website : www.fhcrone.eu

-Flange connections CLASS 150 WNRF acc. ANSI B16.5  
-The boilers are provided with 2 lifting lugs.  
-Safety valves connections 2"NPT male

-Feed connections NPT male

Modifications reserved 10-2019