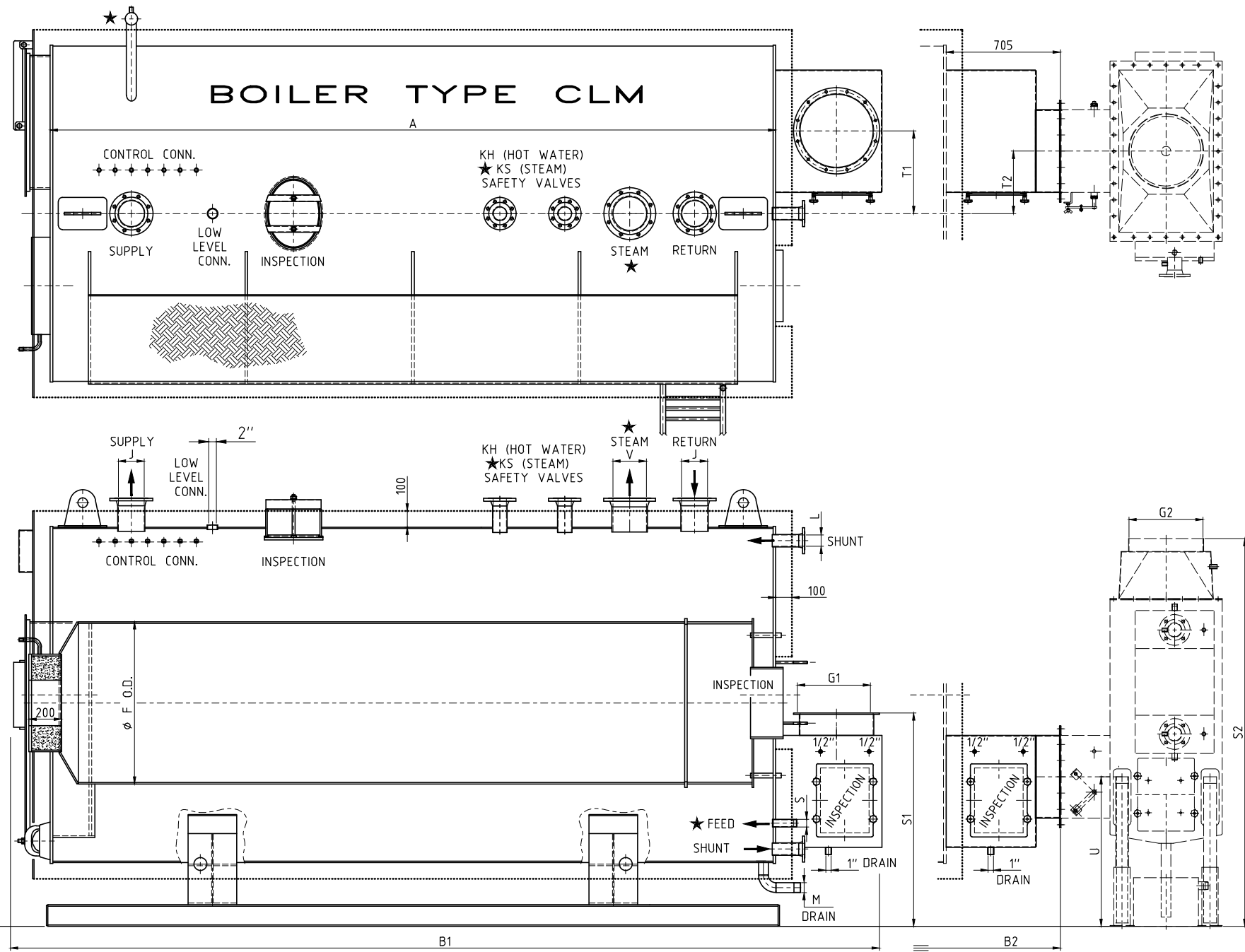


- ★-The hotwater boiler has NO levelcolumn, feed and steamconnection.
- ★-The safety valve conn. of the hotwater boilers are acc. tabel KH
- ★-The safety valve conn. of the steam boilers are acc. tabel KS



Type	Capacity (Mcal)	Capacity (kW)	Steam Capacity (kg.st/h)	Water vol. (Ltr.)	Weight (kg)	H.S. (m2)	Gassided Vol. (m3)	dp (mmWC)	A	B1	B2	C1	C2	D	E	F	G1	H	J	KH	L	M	N	P	R	S1	T1	B2	G2	S2	T2	U	V	KS	Excellent cond. TYPE
CLM 40	1000	1200	1580	5200	4600	40	2,2	60	3570	4265	4450	1866	2016	2246	1183	800	300	1000	DN125-PN6	2x2"	50	2"	2296	340	420	1261	428	4500	300	2299	305	918	DN125-PN6	2x DN50-16	L12C
CLM 50	1200	1500	1975	6140	5170	50	2,7	55	3570	4450	4450	2016	2166	2396	1258	880	350	1000	DN150-PN6	2x2"	65	2"	2446	385	420	1206	465	4500	350	2287	405	813	DN150-PN6	2x DN50-16	L18C
CLM 60	1500	1800	2370	8290	6650	60	3,6	60	4470	5350	5350	2086	2236	2466	1293	900	400	1250	DN150-PN6	2x2"	65	2"	2516	400	420	1286	485	5400	350	2367	370	893	DN150-PN6	2x DN65-16	L18C
CLM 75	2000	2400	3160	9780	7500	75	4,5	62	4470	5350	5350	2266	2416	2646	1383	1000	450	1250	DN150-PN6	2x2"	65	2"	2696	445	580	1321	508	5400	450	2402	385	928	DN200-PN6	2x DN80-16	L24C
CLM 95	2500	3000	3950	11790	9100	95	5,9	60	4470	5400	5400	2496	2646	2869	1491	1150	500	1500	DN200-PN6	2x2"	80	2"	2919	485	580	1479	600	5400	450	2562	485	1036	DN200-PN6	2x DN80-16	L30C
CLM 115	3000	3600	4740	12970	9950	115	6,7	68	4470	5450	5450	2616	2766	2989	1551	1200	550	1500	DN200-PN6	3x2"	100	2"	3039	520	580	1539	633	5400	500	2722	455	1096	DN200-PN6	2x DN100-16	L36C
CLM 130	3500	4200	5530	15790	11500	130	8,3	68	5470	6500	6500	2616	2766	3008	1570	1200	600	1500	DN200-PN6	3x2"	100	2"	3058	520	580	1518	605	6400	550	2706	475	1025	DN250-PN10	2x DN100-16	L42C
CLM 145	4000	4800	6320	17080	12300	145	9,0	68	5470	6550	6550	2716	2856	3108	1620	1250	650	1700	DN200-PN6	3x2"	100	2"	3158	545	580	1508	625	6400	600	2696	525	1015	DN250-PN10	3x DN100-16	L48C
CLM 155	4500	5400	7110	18190	14300	155	10,2	76	5470	6600	6600	2820	2960	3212	1672	1350	700	1700	DN250-PN10	4x2"	100	2"	3262	545	580	1600	698	6400	650	2728	605	1057	DN250-PN10	3x DN100-16	L60C
CLM 170	5000	6000	7900	19350	14980	170	11,0	76	5470	6600	6600	2920	3060	3312	1742	1400	700	1800	DN250-PN10	4x2"	100	2"	3362	570	700	1610	713	6400	650	2738	605	1067	DN300-PN10	3x DN100-16	L60C
CLM 185	5500	6600	8690	21740	16520	185	12,7	80	5770	6900	6900	3020	3160	3431	1841	1450	700	1800	DN250-PN10	4x2"	100	2"	3481	595	700	1659	708	6700	700	2787	583	1116	DN300-PN10	3x DN100-16	L72C
CLM 200	6000	7200	9480	23850	17350	200	13,4	80	5770	6950	6950	3120	3260	3531	1891	1500	750	1800	DN250-PN10	2x DN80-16	125	2"	3581	615	700	1754	768	6700	700	2882	605	1211	DN300-PN10	4x DN100-16	L72C
CLM 220	7000	8400	11060	26370	19550	225	16,0	90	5970	7200	7200	3270	3410	3681	1966	1600	800	2000	DN250-PN10	2x DN100-16	125	2,5"	3731	640	830	1830	838	6900	700	2938	668	1287	DN350-PN10	4x DN100-16	L84C
CLM 250	8000	9600	12640	29520	21300	250	17,8	98	6670	7950	7950	3270	3410	3681	1966	1600	850	2000	DN250-PN10	2x DN100-16	125	2,5"	3731	640	830	1854	828	7600	800	3082	705	1261	DN350-PN10	4x DN125-16	L96C
CLM 275	9000	10800	14220	30500	22650	275	18,4	98	6670	8000	8000	3320	3460	3731	1991	1600	900	2000	DN300-PN10	2x DN100-16	125	2,5"	3781	665	830	1879	828	7600	850	3102	620	1286	DN400-PN10	4x DN125-16	L108C



Grote Esch 400
2841 MJ Moordrecht (NL)

Tel. +31(0)182 614 482
fax +31(0)182 633 257

e-mail : info@fcrone.nl
website : www.fcrone.eu

- Flange connections up to/incl. DN200 acc. EN1092-1 PN6 from DN250 acc. EN1092-1 PN10
- Exportboilers or boilers from type CLM60 to CLM275 are provided with 2 lifting lugs.
- Flange connections safety valves acc. EN1092-1 PN16

Modifications reserved 10-2019